

HK 270.00 L10+L6

KNUCKLE BOOM CRANE



HIDROKON



Power and Performance Together!

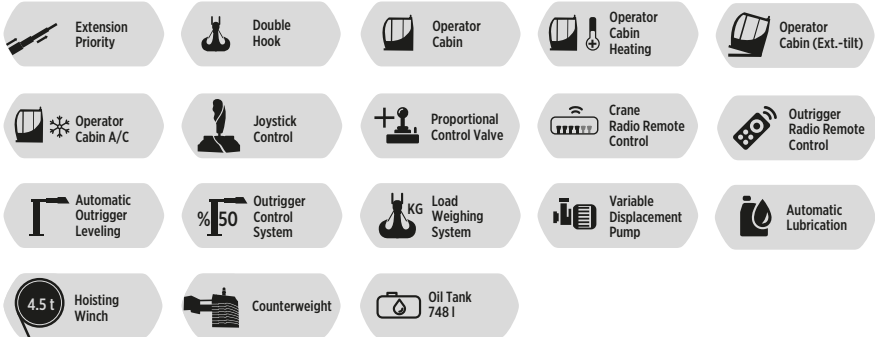
HK 270.00 L10+L6 Knuckle Boom Crane

*With high quality equipment,
superior capability and
maximum safety features.*





FEATURES



Crane Attachments

● Available ✗ Not Available	Fly Jib	Hoisting Winch Single Line	Hoisting Winch Single Line	Hoisting Winch Single Line	Hoisting Winch Single Line
		1937 KG	3059 KG	3569 KG	4588 KG
HK 270.00	●	✗	✗	●	●

● Available ✗ Not Available	Counter Weight	Load Case Extension	5th-6th Stabilizers	Manual Extension Booms
HK 270.00	●	✗	●	●

Other Attachments

Double Hook

Body Apparatus For Utility Pole

Hook Block - Single Sheave

Pallet Fork

Towing Equipment

Angular Extension Boom

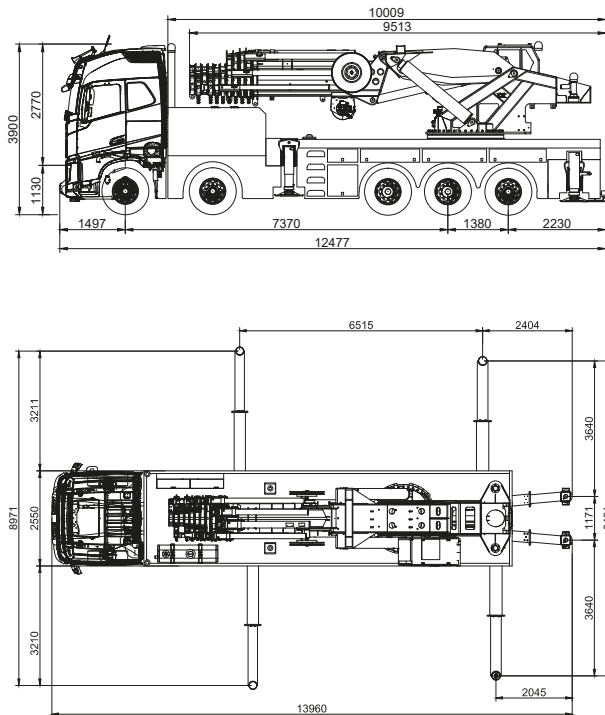
H Frame Lifting Beam

Angular Extension Boom
(Angle Adjustable)

Technical Specifications

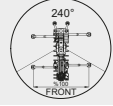
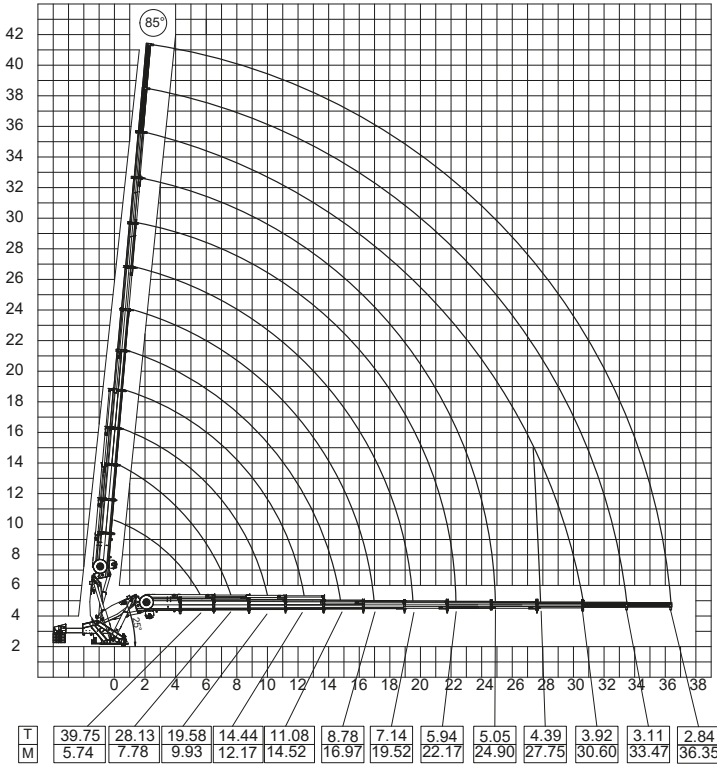
Max. Hydraulic Vertical Outreach	35.59 m	116' 9.18"
Max. Manual Vertical Outreach	41.32 m	135' 6.77"
Max. Hydraulic Vertical Outreach With Fly Jib	54.10 m	177' 5.92"
Max. Manual Vertical Outreach With Fly Jib	58.31 m	191' 3.66"
Working Pressure	300 bar	4351 psi
Rotation Angle	∞ (Endless)	∞ (Endless)
Number Of Hydraulic Extensions	10	10
Number Of Hydraulic Extensions Of Fly Jib	6	6
Number Of Manual Extensions	2	2
Number Of Manual Extensions Of Fly Jib	2	2
Counter Weight	6 x 1320 kg	6 x 2910 lbs
Oil Tank Capacity	748 l	748 l
Dead Weight (Std.)	31400 kg	69,225 lbs
Dead Weight (Std.) With Fly Jib	34290 kg	75,596 lbs

Dimensions (mm)



*Vehicle model selection may vary depending on country highway regulations, the image above is for illustration purposes only.

HK 270.00 L10+2 Lifting Capacity



Main Boom
1. Manual Ext.
Max 3110 kg

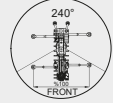
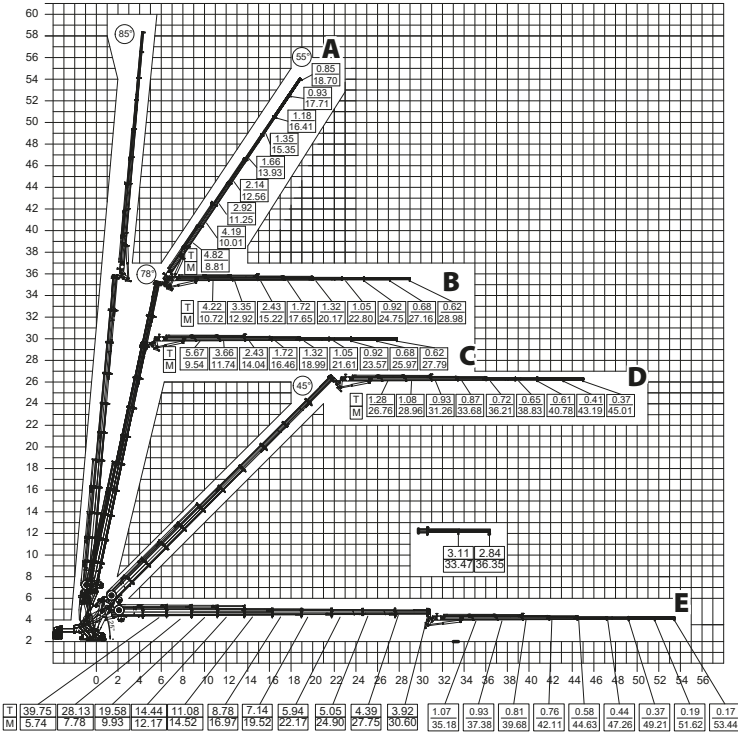
Main Boom
2. Manual Ext.
Max 2840 kg

- * Lifting capacities of the main boom are valid when manual extensions are not installed .
- * In vertical and horizontal distances , boom deflections are not calculated .
- * Lifting capacities may vary around \pm %5
- * Subject to change without prior notice.
- * In the case of working in front of the cab area and / or on a surface where outrigger jacks are not balanced, all the responsibility belongs to the user.

max.	Feet&inch	90000 kg	198,416 lbs
5.74 m	18' 9.98"	39750 kg	87,633 lbs
7.78 m	25' 6.29"	28130 kg	62,016 lbs
9.93 m	32' 6.94"	19580 kg	43,166 lbs
12.17 m	39' 11.13"	14440 kg	31,834 lbs
14.52 m	47' 7.65"	11080 kg	24,427 lbs
16.97 m	55' 8.11"	8780 kg	19,356 lbs
19.52 m	64' 0.50"	7140 kg	15,741 lbs
22.17 m	72' 8.83"	5940 kg	13,095 lbs
24.90 m	81' 8.31"	5050 kg	11,133 lbs
27.75 m	91' 0.51"	4390 kg	9,678 lbs
30.60 m	100' 4.72"	3920 kg	8,642 lbs
33.47 m*	109' 9.71"	3110 kg	6,856 lbs
36.35 m*	119' 3.10"	2840 kg	6,261 lbs

* Manual extension boom

HK 270.00 L10+L6+2 Lifting Capacity



Main Bom
1. Manual Ext.
Max 3110 kg

Main Bom
2. Manual Ext.
Max 2840 kg

Jib Bom
1. Manual Ext.
Max 930 kg

Jib Bom
2. Manual Ext.
Max 850 kg

* Lifting capacities of the main boom are to be considered when the fly jib is not installed.

* In vertical and horizontal distances, boom deflections are not calculated.

* Fly Jib load capacities are valid when manual extensions are not installed.

* Lifting capacities may vary around $\pm 5\%$

* Subject to change without prior notice.

* In the case of working in front of the cab area and / or on a surface where outrigger jacks are not balanced, all the responsibility belongs to the user.

A

FLY JIB	Feet&Inch	32000 kg	70,547 lbs
8.81 m	28' 10.85"	4820 kg	10,626 lbs
10.01 m	32' 10.09"	4190 kg	9,237 lbs
11.25 m	36' 10.91"	2920 kg	6,437 lbs
12.56 m	41' 2.48"	2140 kg	4,717 lbs
13.93 m	45' 8.42"	1660 kg	3,659 lbs
15.35 m	50' 4.33"	1350 kg	2,976 lbs
16.41 m	53' 10.06"	1180 kg	2,601 lbs
17.71 m*	58' 1.24"	930 kg	2,050 lbs
18.70 m*	61' 4.22"	850 kg	1,873 lbs

* Manual extension boom

HK 270.00 L10+L6+2 Lifting Capacity

B

FLY JIB	Feet&Inch	32000 kg	70,547 lbs
10.72 m	35' 2.04"	4220 kg	9,303 lbs
12.92 m	42' 4.66"	3350 kg	7,385 lbs
15.22 m	49' 11.21"	2430 kg	5,357 lbs
17.65 m	57' 10.88"	1720 kg	3,791 lbs
20.17 m	66' 2.09"	1320 kg	2,910 lbs
22.80 m	74' 9.63"	1050 kg	2,314 lbs
24.75 m	81' 2.40"	920 kg	2,028 lbs
27.16 m*	89' 1.29"	680 kg	1,499 lbs
28.98 m*	95' 0.94"	620 kg	1,366 lbs

* Manual extension boom

C

FLY JIB	Feet&Inch	32000 kg	70,547 lbs
9.54 m	31' 3.59"	5670 kg	12,500 lbs
11.74 m	38' 6.20"	3660 kg	8,068 lbs
14.04 m	46' 0.75"	2430 kg	5,357 lbs
16.46 m	54' 0.03"	1720 kg	3,791 lbs
18.99 m	62' 3.63"	1320 kg	2,910 lbs
21.61 m	70' 10.78"	1050 kg	2,314 lbs
23.57 m	77' 3.95"	920 kg	2,028 lbs
25.97 m*	85' 2.44"	680 kg	1,499 lbs
27.79 m*	91' 2.09"	620 kg	1,366 lbs

* Manual extension boom

D

FLY JIB	Feet&Inch	32000 kg	70,547 lbs
26.76 m	87' 9.54"	1280 kg	2,821 lbs
28.96 m	95' 0.15"	1080 kg	2,380 lbs
31.26 m	102' 6.70"	930 kg	2,050 lbs
33.68 m	110' 5.98"	870 kg	1,918 lbs
36.21 m	118' 9.59"	720 kg	1,587 lbs
38.83 m	127' 4.74"	650 kg	1,433 lbs
40.78 m	133' 9.51"	610 kg	1,344 lbs
43.19 m*	141' 8.39"	410 kg	903 lbs
45.01 m*	147' 8.04"	370 kg	815 lbs

* Manual extension boom

E

FLY JIB	Feet&Inch	32000 kg	70,547 lbs
35.18 m	115' 5.03"	1070 kg	2,358 lbs
37.38 m	122' 7.65"	930 kg	2,050 lbs
39.68 m	130' 2.20"	810 kg	1,785 lbs
42.11 m	138' 1.87"	760 kg	1,675 lbs
44.63 m	146' 5.08"	580 kg	1,278 lbs
47.26 m	155' 0.62"	440 kg	970 lbs
49.21 m	161' 5.40"	370 kg	815 lbs
51.62 m*	169' 4.28"	190 kg	418 lbs
53.44 m*	175' 3.93"	170 kg	374 lbs

* Manual extension boom